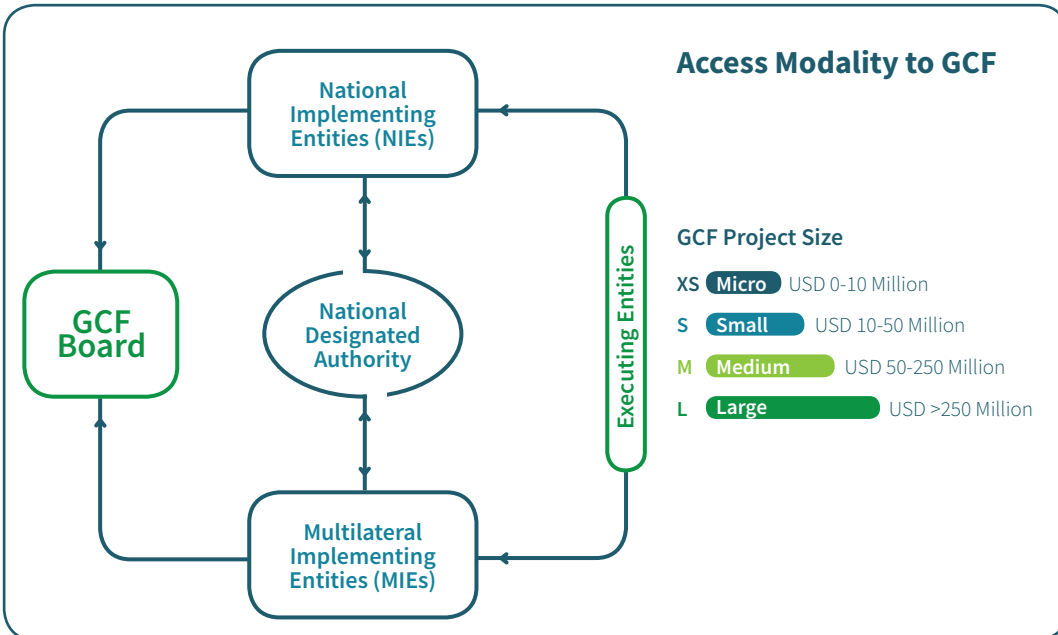
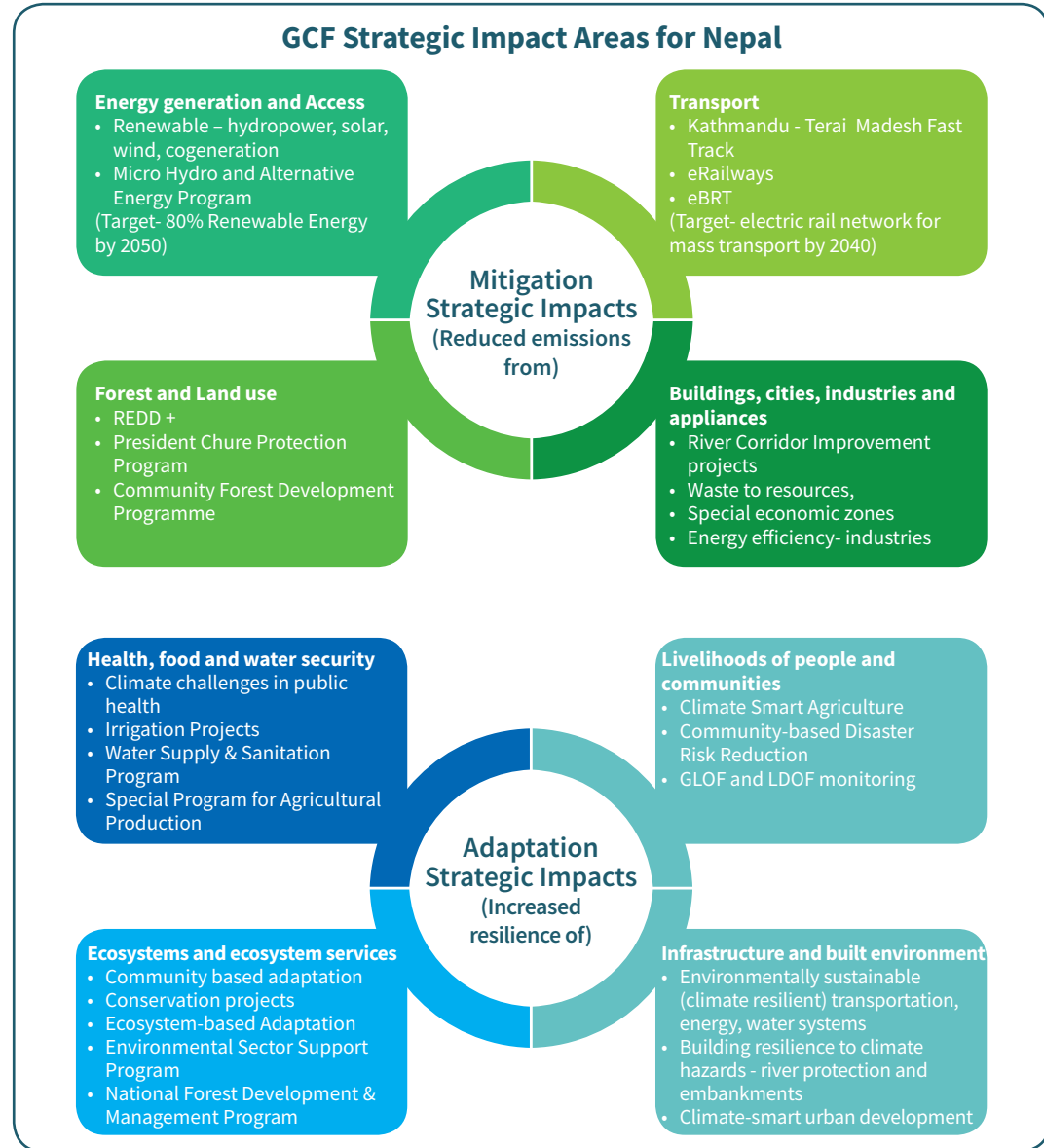
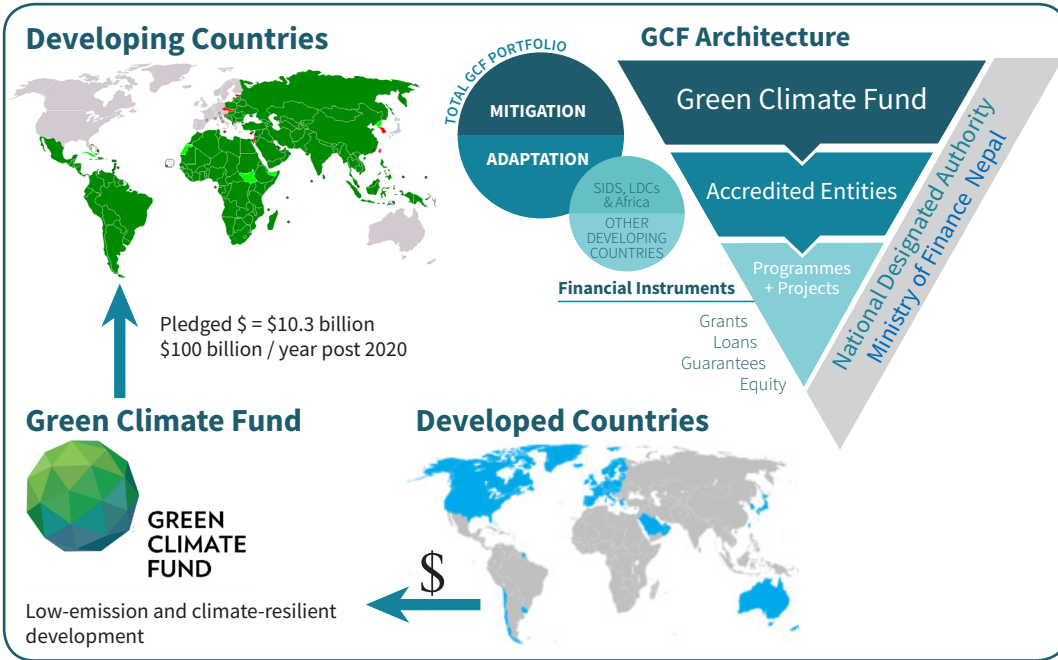




# Access to Green Climate Fund (GCF)



**Nepal Development Research Institute**  
 Shree Durbar Tole, Pulchowk, Lalitpur  
 GPO Box: 8975, EPC 2201, Kathmandu, Nepal  
 Telephone : +977-1-5537362, 5554975  
 Email : info@ndri.org.np  
 Web :http://www.ndri.org.np



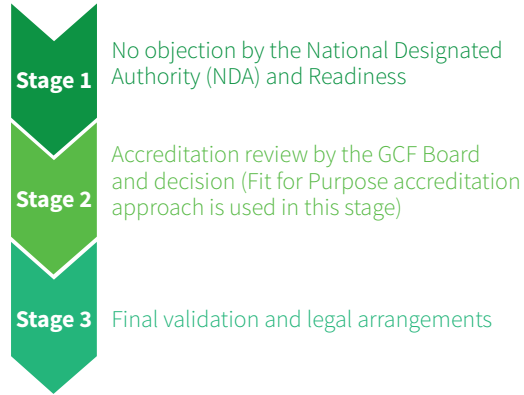
**Prakriti Resources Centre**



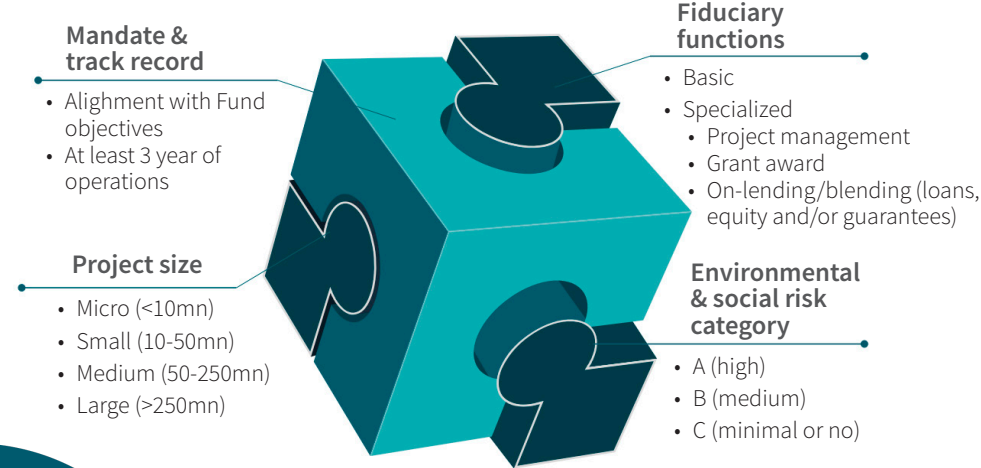
Climate & Development Knowledge Network

# Accreditation of National Implementing Entities (NIEs) to GCF





## Accreditation Process



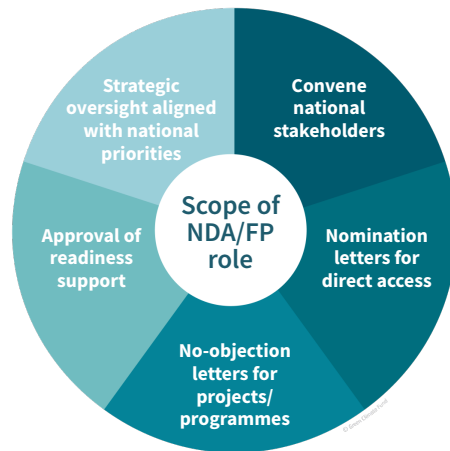
## Fit for purpose approach to accreditation



## Accreditation requirements

Fiduciary standards			
<b>Basic</b>	<b>Specialized</b>		
<ul style="list-style-type: none"> <li>• Proper accounting of finance</li> <li>• Transparency</li> <li>• Accountability</li> </ul>	<ul style="list-style-type: none"> <li>• Project Management</li> <li>• Grant award mechanism</li> <li>• On-lending / blending</li> </ul>		
Environment and social safeguards (ESS) standards			
<b>Level of ESS Risk</b>	<b>High</b>	<b>Medium</b>	<b>Low</b>
			
<b>Gender policy</b>			

## National Designated Authority for Nepal Ministry of Finance



## Criteria for selection of potential NIEs

<b>Institutional Mandate</b>	<ul style="list-style-type: none"> <li>• Past experiences on strategic areas</li> <li>• Organization setup</li> </ul>
<b>Preparedness</b>	<ul style="list-style-type: none"> <li>• Fiduciary standards (basic + specialized)</li> <li>• Environmental and social safeguards</li> <li>• Gender policy</li> </ul>
<b>Experience</b>	<ul style="list-style-type: none"> <li>• Implementation of donor funded projects (compliance with fiduciary standards, ESS and gender policy of development partners)</li> </ul>
<b>Others</b>	<ul style="list-style-type: none"> <li>• Potential to generate co-benefits</li> <li>• Diversity of potential institutions</li> </ul>

## Potential National Implementing Entities

### Ministries and Departments



### Sub-national, Local bodies

Metropolitan City  
Sub-Metropolitan City  
Municipality Council  
Village Council



### Public Sector Institutions



### Private Sector Institutions



Government of Nepal  
PRESIDENT CHURE-TARAI MADHESH CONSERVATION DEVELOPMENT BOARD

**Nepal Development Research Institute**  
Shree Durbar Tole, Pulchowk, Lalitpur  
GPO Box: 8975, EPC 2201, Kathmandu, Nepal  
Telephone : +977-1-5537362, 5554975  
Email : info@ndri.org.np  
Web : http://www.ndri.org.np

